

# Milestone XProtect Enterprise:

top performance IP video surveillance with a comprehensive feature set.

XProtect Enterprise is the right product for larger installations or multiple sites that need robust surveillance software with the full functionality of advanced management, flexible scheduling, fast searching, analysis, and integration with other systems. Controlling unlimited numbers of

cameras, multiple servers and multiple sites, XProtect Enterprise interfaces with the widest choice of network video and computer hardware equipment – efficient to install and easily scalable for future expansions.

## MULTIPLE ADVANTAGES:

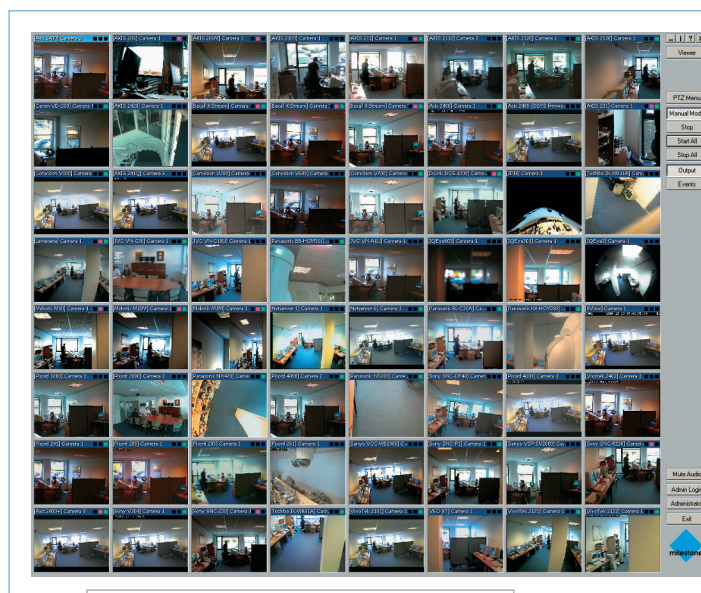
**Compatible** with over 90 different IP video products (MJPEG and MPEG4) from the leading manufacturers, so you choose the hardware you want - in combinations, too.

**Dependable**, robust and stable performance proven in operation on more than 85,000 cameras worldwide.

**Flexible** remote access allows you to use the surveillance system from any place and at any time, using a PC, laptop or PDA.

**Scalable** open architecture based on IP technology with ongoing development and regular upgrades gives you long-term returns on your surveillance investment.

**Future-safe** IP network approach is the foundation for tomorrow - available today.



*XPE manages any number of cameras.*

*"We selected Milestone for several reasons: its open architecture supports a mix of hardware that provides great cost savings, it was the only solution that allowed us to scale the storage high enough to allow 90+ days of archived video, and the independent hardware platform lets us utilize inexpensive, very large serial ATA drives for video storage. The browser interface for remote viewing and incident review allows any of our internal workstations to access video images without the need for proprietary software application installation, and the open standards make sharing/e-mailing of video with outside agencies effortless. Milestone software is easily updated when new enhancements and technologies become available, too. It fit our current needs and will also scale nicely for future expansion."*

*– Peter Ducato, Exec. VP & CAO, F&M Banks, California*



# XProtect Enterprise

provides extensive functionality.



## VIDEO & AUDIO RECORDING

- ◆ Simultaneous digital video recording, viewing and playback of camera images.
- ◆ Multi-channel audio recording with instant playback.
- ◆ Support for MPEG4 cameras/video encoders.
- ◆ View both MPEG4 & MJPEG streams on screen at the same time!
- ◆ Handles up to 64 cameras per server simultaneously - available as flexible licenses charged per camera.
- ◆ Dual or triple computer monitor viewing with HotSpot window and Carousel display.
- ◆ Recording technology: high speed database holding JPEG images or MPEG4 streams.
- ◆ Recording/viewing speed: 30+ frames per second per camera, only limited by hardware.
- ◆ Recording quality depends entirely on camera and video server capabilities: no software limitation.
- ◆ Unlimited recording capacity with multiple archives per day.
- ◆ De-interlacing of images in playback.

## VIDEO MOTION DETECTION (VMD)

- ◆ Built-in, real time, fully adjustable Video Motion Detection (VMD).
- ◆ VMD supports excluded zones.
- ◆ Speed Up on Motion: cameras can be set to speed up the number of frames when motion is detected or an event occurs, like activation of an external sensor.
- ◆ Active alerting through sound, email and SMS messages.

## SEARCH, EXPORT & SECURE DATA PROTECTION

- ◆ Instant search on recordings based on date/ time and activity/alarm (Video Motion Detection).
- ◆ 'Smart Search' for specified image zones and objects.
- ◆ Evidence can be generated as a printed report with time and date stamp, as a JPEG image, or as an AVI film.
- ◆ Export audio recordings in WAV format or included in AVI film.
- ◆ Export of 'Evidence CD' contains native database export and configured recordings Viewer for instant, easy viewing by authorities.
- ◆ Encryption & password protection option for exported recordings and files.
- ◆ Ability to add comments to exported evidence, also encrypted.
- ◆ Audit logs of exported evidence by user & file.
- ◆ Audit logs of Remote Client user activity by time, locations and cameras.

## ADVANCED PTZ CONTROL

- ◆ Pan Tilt Zoom pre-set positions, up to 50 positions per camera, per schedule.
- ◆ PTZ go-to preset position on events.
- ◆ Combine PTZ patrolling and go-to positions on events.
- ◆ Set multiple patrolling schedules per camera per day: i.e. different for day/night/weekends.
- ◆ Pause PTZ patrolling and control the movement manually, after which the scheduled patrolling resumes automatically.
- ◆ Automatically start a stopped PTZ camera while viewing through the Remote Client, like a 'time out' period: the camera reverts to its scheduled patrolling.
- ◆ PTZ scanning on supported devices: viewing or recording while moving slowly from one position to another.
- ◆ VMD-sensitive PTZ patrolling among selected presets.
- ◆ Joystick functionality for supported cameras.
- ◆ IPIX technology for PTZ in 360° recorded images.

## ADMINISTRATION & INTEGRATION

- ◆ 'On-the-fly' configuration changes while recording is in operation.
- ◆ Create & name manual event buttons, up to 8 per camera, global (all cameras) or camera-specific.
- ◆ Hourly or daily database archiving options.
- ◆ Archiving can be automatically moved to a network drive for more savings in storage capacity on the local server – with images still available transparently for playback.
- ◆ Option to hide Administrator button from other users.
- ◆ Multi-threaded 32-bit programming technology capable of utilizing multiple processors, limited only by Operating System.
- ◆ DNS support (Dynamic Name Server lookup).
- ◆ Integration capability with Milestone XProtect Retail, Transact and Matrix solutions.
- ◆ Optional PDA Client provides access to recordings and live cameras from PDAs (running Microsoft Pocket PC 2003).

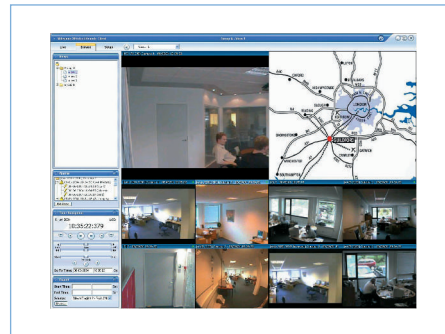
*"The advantage with the Milestone IP surveillance is that I always know what's going on. I can access it remotely from home if there are second-shift issues to resolve. Management and the Security Manager can also use remote access to monitor the business from headquarters. At night I can see exactly what time shipments are going out, and how they are proceeding. The pictures are very clear. I really like the system because it keeps my operation running more efficiently."*

*- Elesa Hayden, Operations Manager,  
Mallory Distribution Center in Memphis, Tennessee*

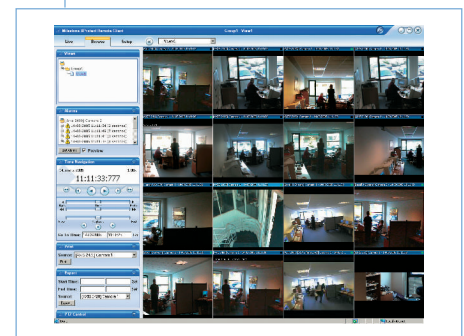
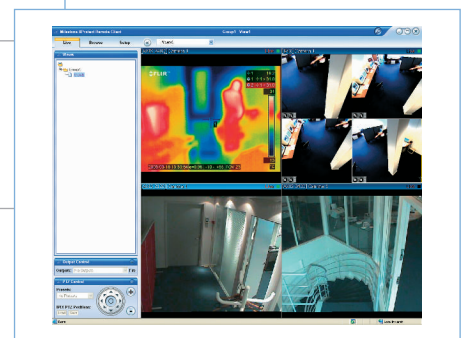
# XProtect Enterprise comes with a Remote Client: setting industry standards for remote access.

## REMOTE CLIENT FEATURES

- ◆ From remote locations you can view live video from 1-16 cameras.
- ◆ Browse and playback recorded images from 1-16 cameras from the same or different servers simultaneously.
- ◆ Make advanced user profiles via the camera-to-user assignment function: the main administrator can set up separate users to view specific cameras for their locations only.
- ◆ Views can be user-defined in various layouts.
- ◆ Import static or active HTML maps for fast navigation to cameras and good premise overviews.
- ◆ Control output port relay operation, i.e. control of gates, etc.
- ◆ View alarm summaries remotely.
- ◆ Alarm Preview thumbnail-window lets you see recorded images faster from each alarm as you scroll down the alarm list.
- ◆ Control your PTZ cameras remotely, also using pre-set positions.
- ◆ Remote PTZ Point-and-Click control.
- ◆ Remote PTZ zoom to a marked rectangle, on supported cameras.
- ◆ Optional automatic start-up of stopped cameras when viewing them in the Remote Client.
- ◆ Pause PTZ patrolling while manually controlling in the Remote Client and the camera reverts to its scheduled patrolling thereafter!
- ◆ IPIX 'Quad View' of all 360° viewable at the same time.
- ◆ Advanced video compression in streaming from server to client gives better use of bandwidth.
- ◆ Audit log in Remote Client on user activity by time, IP address and cameras.
- ◆ Create AVI files or save JPEG images from multiple cameras simultaneously.
- ◆ Support for MPEG4 and MJPEG: View MJPEG and MPEG4 streams on your screen simultaneously!



*View live or  
recorded video  
anytime, from  
anywhere*



## MINIMUM SYSTEM REQUIREMENTS:

- OS:** Windows 2000 Pro, 2000 Server, XP Pro, 2003 Server
- CPU:** single or multiple CPUs, limited only by OS, Intel recommended
- RAM:** minimum 1 Gbyte
- Network:** Ethernet 1 Gbit and over
- Video card:** AGP (min. 1024x768)
- Video colors:** True 24 bit
- HDD:** E-IDE (7200 rpm recommended), or for best performance: Fast SCSI

*Please see the Milestone website for the newest system performance parameters (frames per second); new technology and hardware continue to raise the bar regularly!*

*"We're getting great ROI for our Milestone video surveillance system by using it to manage our Good Manufacturing Practices, meet the top USDA inspection ratings, and maintain our certification that allows us to charge a premium for our products. We're able to see errors: when they happened, who did it, if a pallet goes on the wrong truck, whether they were following procedures. Cutting down on mistakes saves us money."*

*– Phil Muth, President, Coastal Sunbelt Produce, USA*



# Intelligent IP video surveillance software

Milestone Systems is a well-established international software company developing intelligent IP solutions for networked digital video surveillance. Designed with open architecture, the XProtect products offer the flexibility to support your choice of the leading manufacturers' network

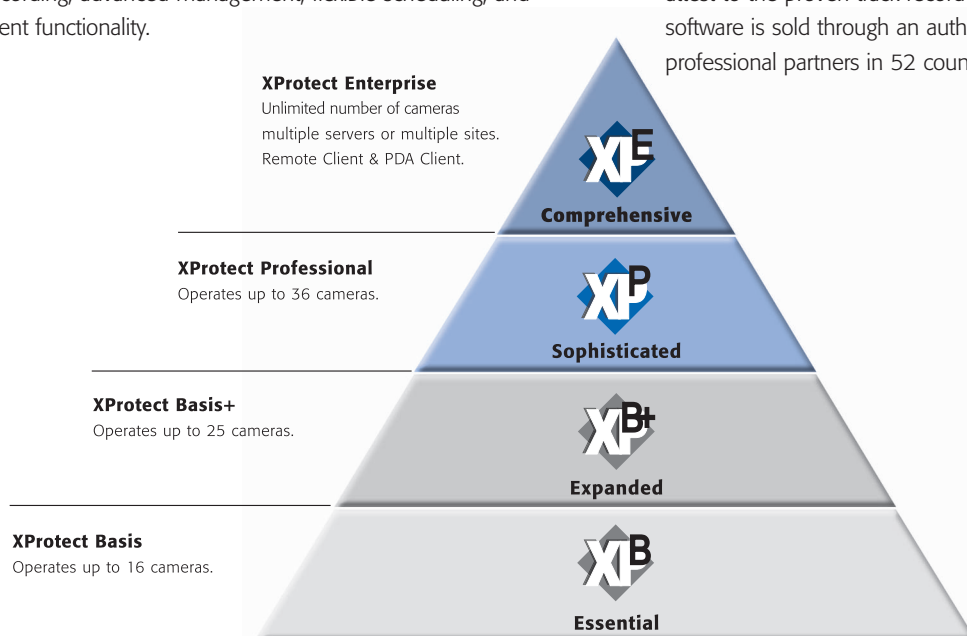
cameras and video servers connected to a LAN, WAN or the Internet. These include equipment from Axis, Canon, Convision, FLIR, IPIX, IQinvision, JVC, Mobotix, Panasonic, Pixord, Sony, Sanyo, Vivotek, Toshiba, and more.

*"We are really pleased with our IP video surveillance from Milestone that lets us tailor the solution for an integrated approach. It helps us improve our bottom line via reduction of fraud, prevention of theft, and increased service levels. In addition to better general surveillance monitoring of the store locations, the software gives us a solution that is integrated with our transaction system to resolve and reduce errors at checkout. We also appreciate the ability to choose our own combination of hardware: we are cost-effectively re-using existing equipment while adding a mix of new hardware controlled by the software. Milestone is a perfect choice being independent and supporting just that kind of flexibility."*

*- Remco Hempenius, Project Manager, IKEA Pilot Store Delft, The Netherlands*

The Milestone product line is based on four main offerings scaled in functionality and price for better tailoring to customer needs. Besides the independence of multi-hardware support, you get robust performance with simultaneous live image playback and recording, advanced management, flexible scheduling, and intelligent functionality.

Milestone solutions are in operation on 85,000+ cameras globally, across a wide spectrum of industries from retail, travel, transportation and production, to finance, health, education, government, the military and law enforcement. 8,500 customers attest to the proven track record of the XProtect products. Milestone software is sold through an authorized channel of more than 150 professional partners in 52 countries.



Choose additional options to integrate with these surveillance engines, adding value by handling greater needs or industry-specific demands:

**XProtect Matrix** allows distribution of live video streams from any camera to any monitor on the network with the option of a spot monitor set-up like a Control Room.

**XProtect Retail and XProtect Transact** handle shrinkage and fraud detection through video evidence combined with time-linked POS cash register or ATM transaction data, and a choice of central or local management.

