

Milestone XProtect Enterprise

top performance IP video surveillance with a comprehensive feature set.

XProtect Enterprise is the right product for larger installations or multiple sites that need robust surveillance software with the full functionality of advanced management, flexible scheduling, fast searching, analysis, and integration with other systems.

Controlling unlimited numbers of cameras, multiple servers and multiple sites, XProtect Enterprise interfaces with the widest choice of network video and computer hardware equipment – easy to install and easily scalable for future expansions.

MULTIPLE ADVANTAGES

COMPATIBLE with around 150 different IP video products (MJPEG and MPEG4) from leading manufacturers, so you can choose the hardware you want - in combinations, too.

DEPENDABLE, robust and stable performance proven in daily operation on more than 100,000 cameras worldwide.

POWERFUL multi-threaded 32-bit programming technology capable of utilizing multiple processors ensures highest performance. Runs on standard computer equipment.

FLEXIBLE remote access allows you to use your surveillance system any place and any time using a PC, laptop or PDA.

SCALABLE open architecture based on IP technology and a flexible licensing structure allows you to grow your installation along with your needs.

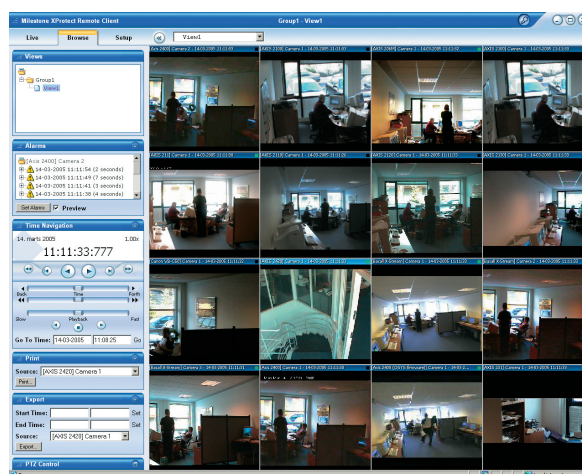
FUTURE-SAFE IP network approach is the foundation for tomorrow – available today. Ongoing product enhancements give you long-term returns on your surveillance investment.

INTEGRATION

- ◆ Expand XPE with XProtect Transact or XProtect Retail that integrate surveillance with ATM or cash register systems for managing loss prevention and fraud.
- ◆ Expand XPE with XProtect Matrix for video monitoring walls and spot monitors in control rooms or at guard stations.
- ◆ Expand XPE with XProtect Central for alarm overviews and technical status in larger installations.
- ◆ Expand XPE with XProtect PDA Client for mobile PDA access to your surveillance.
- ◆ Integrate with access control systems, alarms, gates, building management systems, and more.
- ◆ XProtect Enterprise includes an unlimited number of Remote Clients and Smart Clients for advanced client access to multiple servers over your IP network.



XPE manages any number cameras



XProtect Enterprise 5.6 is delivered with the Remote Client



Milestone XProtect Enterprise

provides extensive functionality.

VIDEO & AUDIO RECORDING

- ◆ Simultaneous digital video recording, viewing and playback.
- ◆ Multi-channel audio recording with instant playback.
- ◆ Support for both MJPEG and MPEG4 cameras/video encoders.
- ◆ Maximum number of cameras simultaneously recorded or viewed: 64 cameras per server.
- ◆ Dual or triple computer monitor viewing with HotSpot window and Carousel display.
- ◆ Recording technology: secure high speed database holding JPEG images or MPEG4 streams.
- ◆ Recording/viewing speed: 30+ frames per second per camera, only limited by hardware.
- ◆ Recording quality depends entirely on camera and video server capabilities: no software limitation.
- ◆ Unlimited recording capacity with multiple archives per day.
- ◆ Archiving to network drives.

VIDEO MOTION DETECTION (VMD)

- ◆ Built-in, real time, fully adjustable, camera independent VMD.
- ◆ VMD exclude zones.
- ◆ VMD activated recording.
- ◆ VMD activated frame rate speed up.
- ◆ VMD activated alerting through email, SMS message or audio alarm.

SEARCH, EXPORT & SECURE DATA

- ◆ Instant search on recordings based on date/time and activity/alarm (Video Motion Detection).
- ◆ 'Smart Search' for specified image zones and objects.
- ◆ Evidence can be generated as a printed report with time and date stamp, as a JPEG image, or as an AVI film.
- ◆ Export audio recordings in WAV format or included in AVI film.
- ◆ Export of 'Evidence CD' contains native database export and configured Recordings Viewer for instant, easy viewing by authorities.
- ◆ Encryption & password protection option for exported recordings and files.
- ◆ Ability to add comments to exported evidence, also encrypted.
- ◆ Audit logs of exported evidence by user & file.
- ◆ Audit logs of Remote Client user activity by time, locations and cameras.

ADVANCED PTZ CONTROL

- ◆ Pan Tilt Zoom pre-set positions, up to 50 positions per camera.
- ◆ PTZ go-to preset position on events.
- ◆ Combine PTZ patrolling and go-to positions on events.
- ◆ Set multiple patrolling schedules per camera per day: i.e. different for day/night/weekend.
- ◆ Pause PTZ patrolling and control the movement manually, after which the scheduled patrolling resumes automatically.
- ◆ Take manually control over a PTZ camera while viewing through the Remote Client. After which the camera reverts to its scheduled patrolling.
- ◆ PTZ scanning on supported devices: viewing or recording while moving slowly from one position to another.
- ◆ VMD-sensitive PTZ patrolling among selected presets.
- ◆ Joystick functionality for supported cameras.
- ◆ IPIX technology for PTZ in 360° recorded images.

ADMINISTRATION

- ◆ 'On-the-fly' configuration changes while recording is in operation.
- ◆ Create & name manual event buttons, up to 8 per camera, global (all cameras) or camera-specific.
- ◆ Hourly to daily database archiving options. (up to 24 archives per day)
- ◆ Archiving can be automatically moved to a network drive for more savings in storage capacity on the local server – with images still available transparently for playback.
- ◆ Option to hide Administrator button from other users.
- ◆ DNS support (Dynamic Name Server lookup).
- ◆ Licensing structure: Flexible multi-site, multi-server license charged per camera.

MINIMUM SYSTEM REQUIREMENTS:

OS: Windows 2000 Pro, 2000 Server, XP Pro or 2003 Server
CPU: Single og multiple CPUs, limited only by OS,
 Intel recommended
RAM: Minimum 1 Gbyte
Network: Ethernet 1 Gbit and over
Videocard: AGP (min. 1024x768)
Video colors: True 24 bit
HDD: E-IDE (7200 rpm recommended)
 or for best performance: Fast SCSIII

Please see the Milestone website for the newest system performance parameters (frames per second).